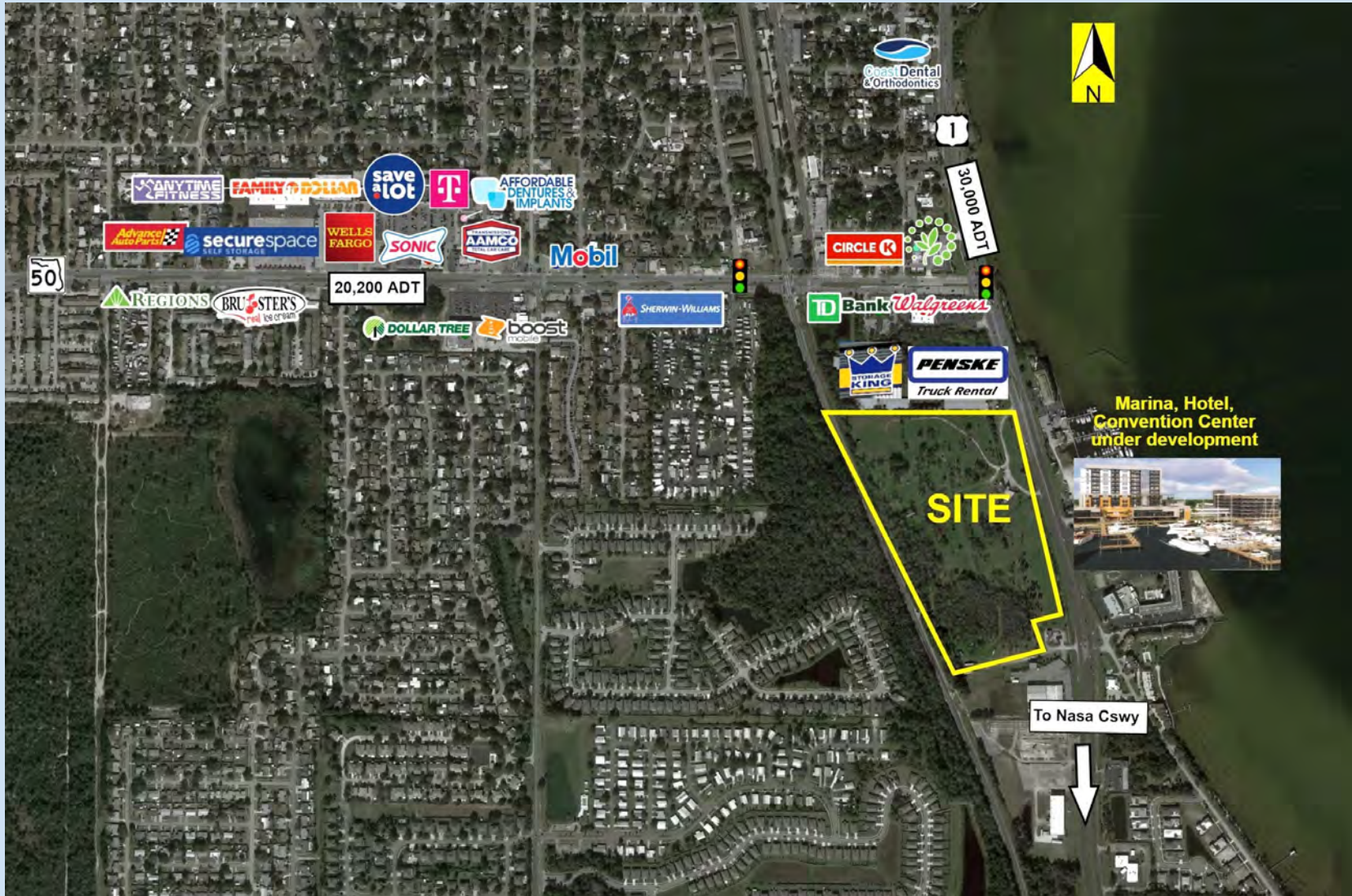


# Multifamily Site | C-Store | Retail | Restaurant Pads Available in Fast Developing Titusville

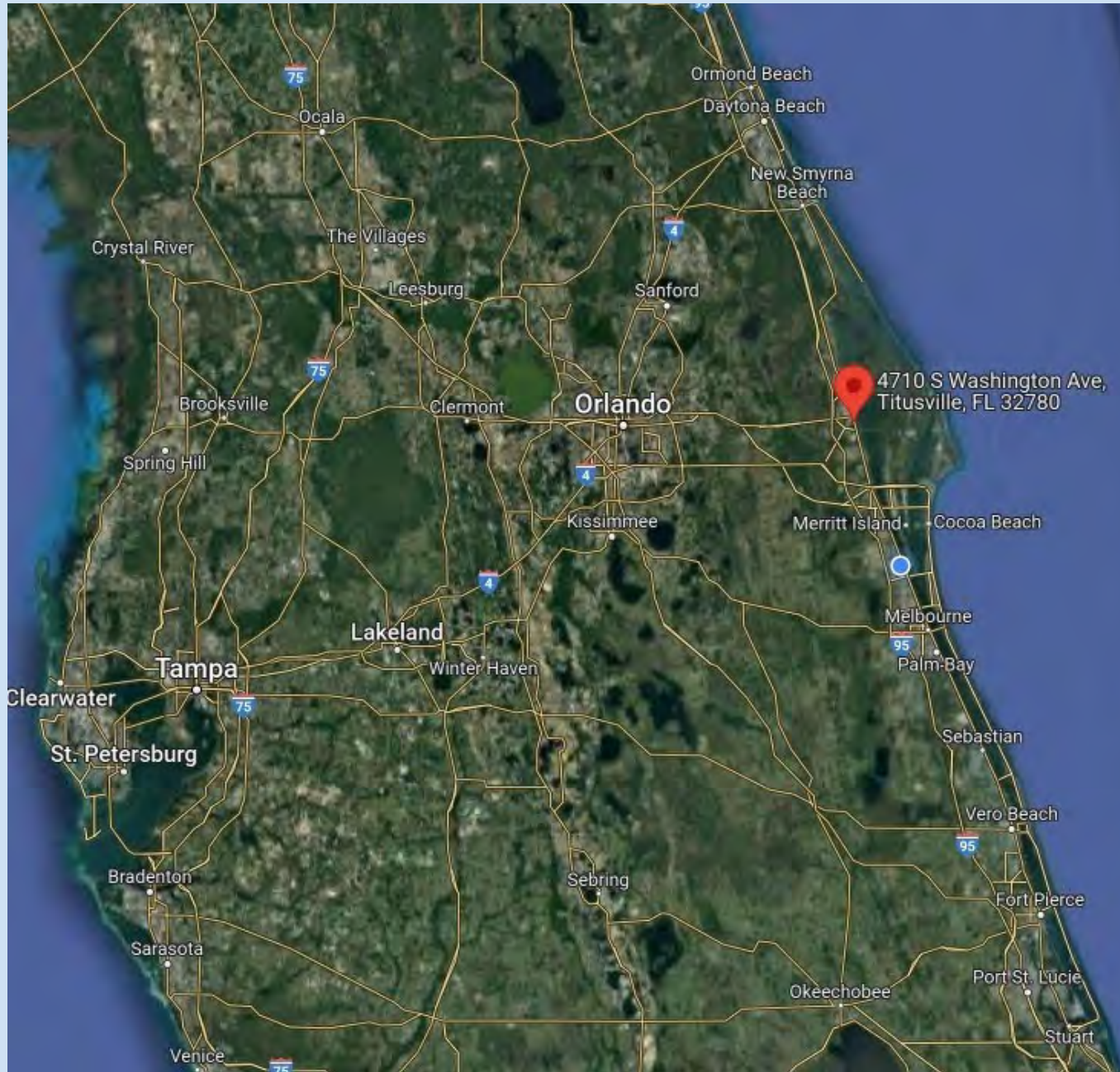


**Southeast Commercial—FL**  
1341 Bedford Ave, Suite A  
Melbourne FL 32940  
cbauman@southeastcommercial.net  
www.SoutheastCommercial-FL.com

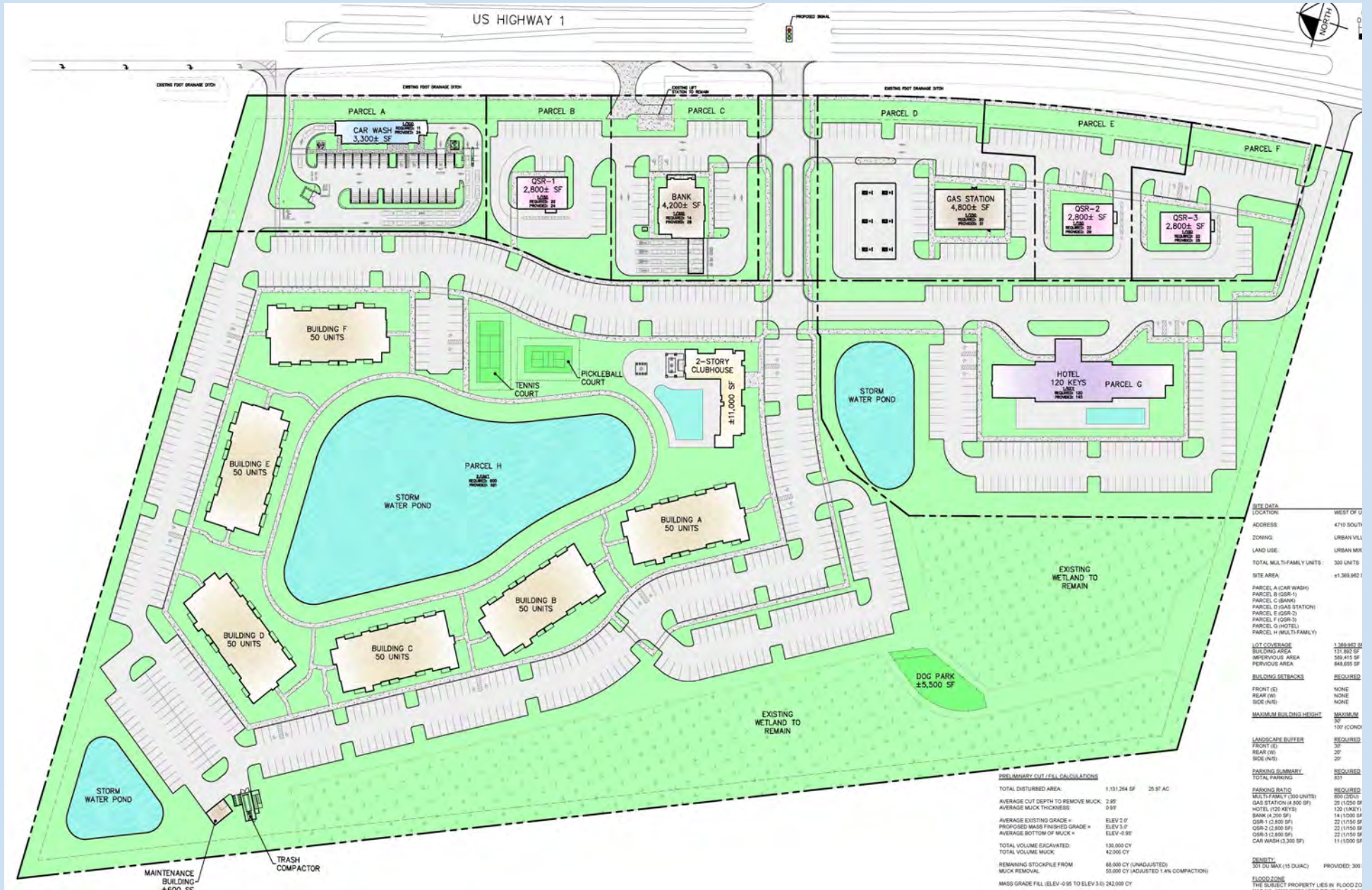
**Carol Bauman**  
Licensed Real Estate Broker  
813.992.9696 Mobile  
321.600.4200 Office

# Brevard County Florida Location Overview

4710 S Washington Ave (US Hwy 1), Titusville, FL 32780



# Project Overview Conceptual



## 30.42 ac Mixed Use Project with Residential & Commercial Sites Available

- Multifamily opportunity with commercial pads fronting South Washington Ave (US Hwy 1)
- Zoned Urban Village, with Land Use of Urban Mixed Use, which allows for C-store, retail, restaurant with drive-thru
- Master development project will include 300 multi-family units
- Offsite storm water, rough grade, utilities and master infrastructure will be in place
- Proposed traffic light with full access as well multiple access points off US Hwy 1
- Adjacent marina currently under redevelopment with 140 slips and planned convention center
- For sale, ground lease or build to suit
- Pricing: contact broker

Lot A 1.39 ac car wash

Lot B .81 ac QSR pad

Lot C 1.07 ac bank pad

Lot D 1.46 ac c-store pad

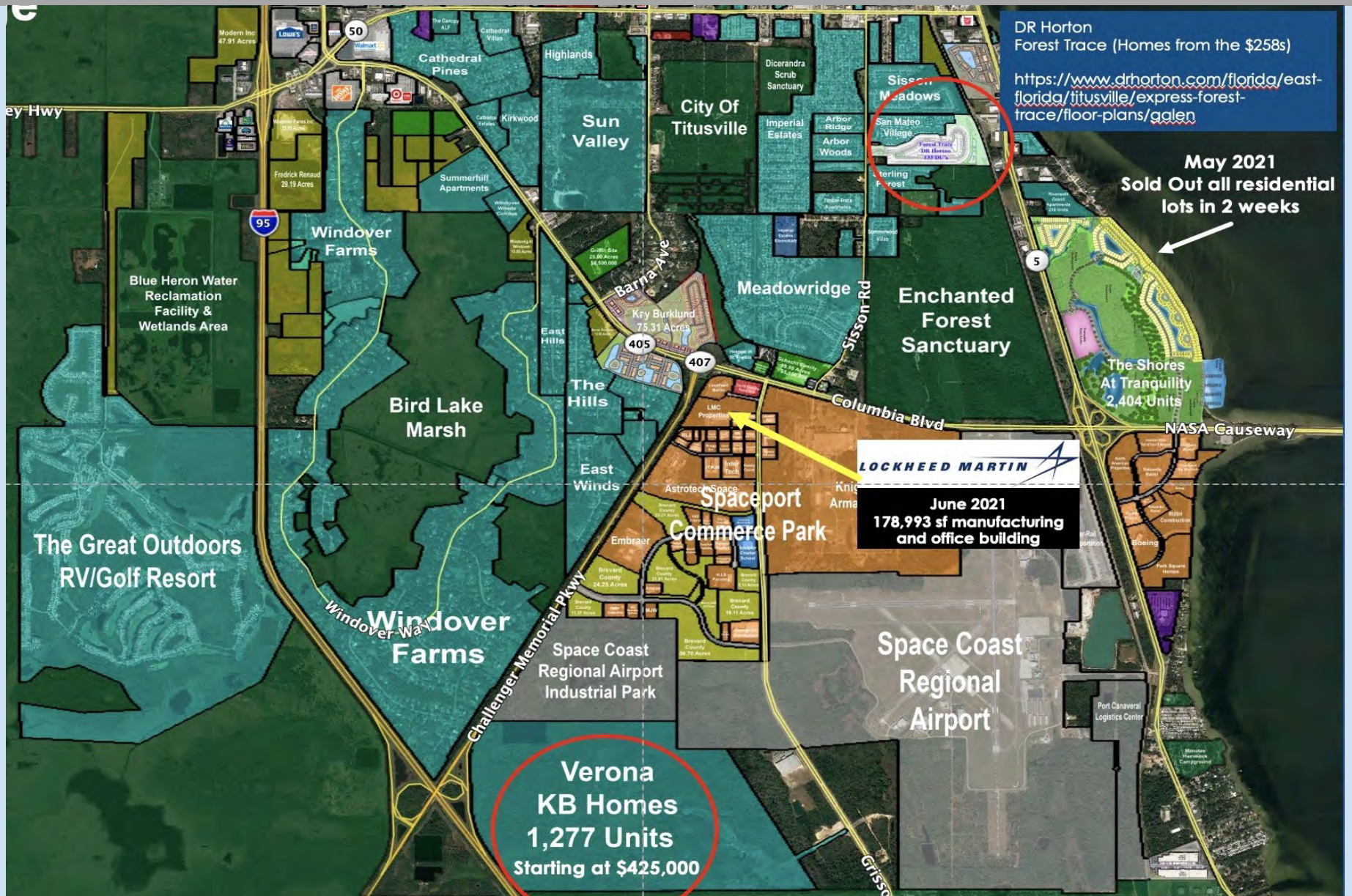
Lot E .88 ac QSR pad

Lot F .93 ac QSR pad

Lot G 3.75 ac hotel pad

Lot H 20.13 ac multifamily site

# Titusville Area Residential Overview



**Over 3,700 New Residential Units In Proposed in Trade Area**

# Titusville Area Development

STORIES / NEWS

## Florida 'innovation park' construction planned next to Space Coast airport

July 29, 2022, 01:55pm EDT



A massive new industrial space is in the works next to a Brevard County spaceport.  
Erik Isakson

**Key Developers to build Phase I of almost 1,000,000 sf of industrial space on Grissom Parkway & Perimeter Rd. in Titusville**

By Alex Soderstrom - OJB Staff Writer & Orlando Inno Reporter

## Breaking: Satellite maker Terran Orbital to create thousands of jobs in expansion to Space Coast

Sep 27, 2021, 9:59am EDT

The Kraken has been released.

Terran Orbital Corp. will invest \$300 million in a Space Coast satellite manufacturing facility that will create 2,100 high-wage jobs, a project previously referred to as "Project Kraken."

The company, headquartered in Boca Raton and Torino, Italy, will create the jobs by fourth-quarter 2025, Florida Gov. Ron DeSantis announced in Merritt Island on Sept. 27.



WITTHAYA PRASONGSIN VIA GETTY IMAGES

A satellite manufacturer will create 2,100 jobs by fourth-quarter 2025.

The facility will rise at the Launch and Landing Facility, a launch and reentry site operated by statewide spaceport authority Space Florida in the Cape Canaveral Spaceport. Space



← **May 2022  
New 6,119 sf WAWA  
approved at NWC of Grissom  
Pky & Columbia Blvd.**

# Area Demand Generators



**Southeast Commercial—FL**  
1341 Bedford Ave, Suite A  
Melbourne FL 32940  
cbauman@southeastcommercial.net  
www.SoutheastCommercial-FL.com

**Carol Bauman**  
Licensed Real Estate Broker  
813.992.9696 Mobile  
321.600.4200 Office

# Area Highlights

Titusville is experiencing a renaissance of hyper growth with an economy based upon a mixture of aerospace, manufacturing, healthcare, boating, and tourism. The region is home to NASA's famed Kennedy Space Center and to world-class firms such as Boeing, SpaceX, Blue Origin, Embraer S.A., One Web Satellites, Lockheed Martin and Parrish Medical Center.

Covering over 30 square miles, Titusville is bordered on the west by the St. Johns River, the eastern edge runs along the Indian River Lagoon providing access to the Merritt Island Wildlife Refuge, Canaveral National Seashore and Kennedy Space Center. Titusville's central location offers easy access to Daytona International Speedway, Port Canaveral and all Orlando attractions. Titusville is a convenient destination with four international airports nearby. Titusville is the best place on the east coast for viewing rocket launches!

## Demographics

	3 mile	5 miles	10 miles
Median HH Income	\$67,565	\$66,099	\$71,081
Median Age	45.8	45.8	45
Population	29,614	51,939	106,432

## Traffic Count

US Hwy 1 ADT 30,000



### Southeast Commercial—FL

1341 Bedford Ave, Suite A  
Melbourne FL 32940  
cbauman@southeastcommercial.net  
www.SoutheastCommercial-FL.com

### Carol Bauman

Licensed Real Estate Broker  
813.992.9696 Mobile  
321.600.4200 Office